



NORTHERN LIGHT

WHAT'S INSIDE?

DAWN @NORTH

JP Infra believes in giving back to the society and our mother earth. Small sustainable actions of today can result into a healthy future.

P. 07

JP NORTH ELARA

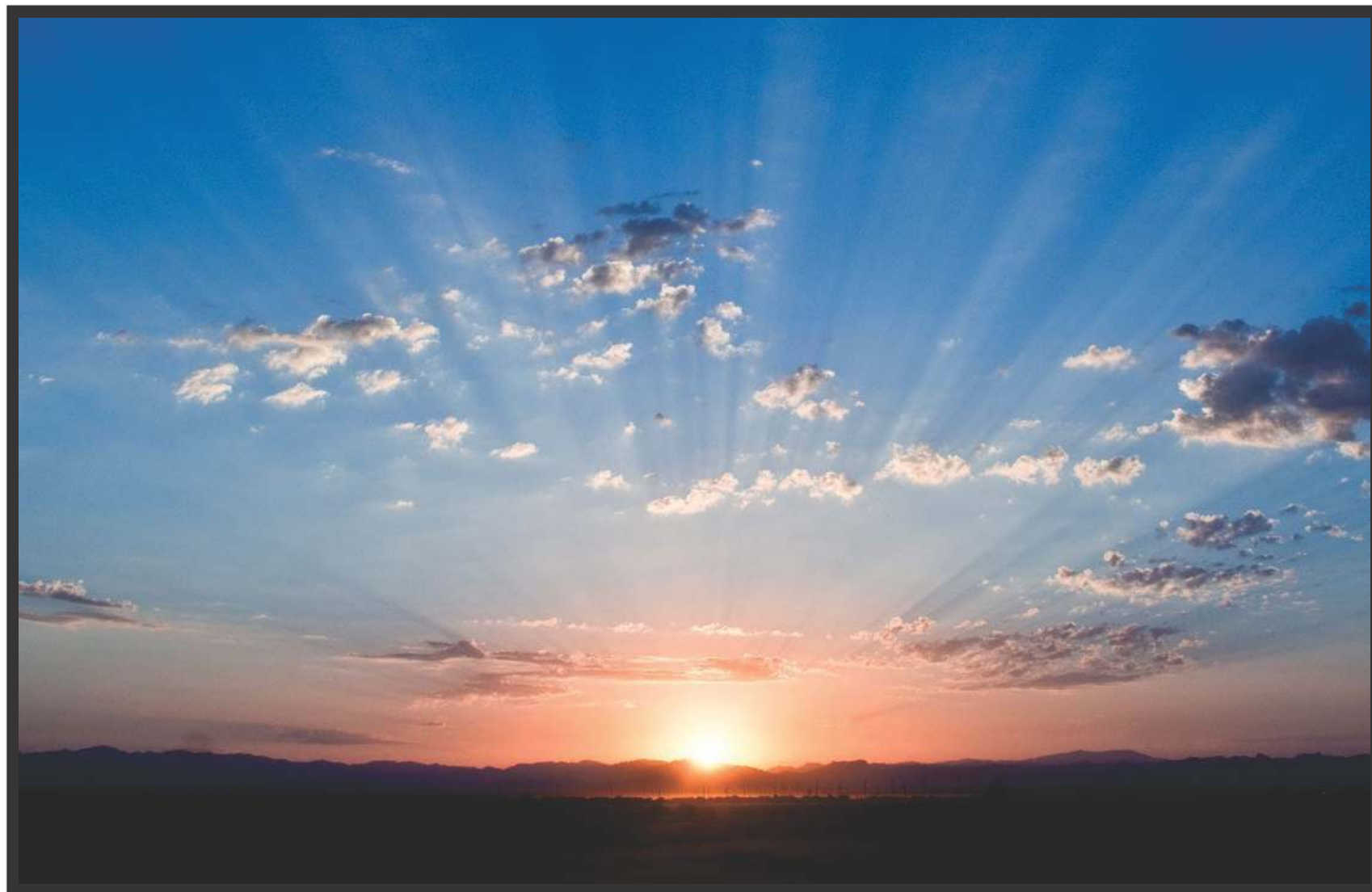
It's a moment of absolute pride for any young professional to own a house. Appreciating the aspirations, JP North Elara is precisely crafted to attain this emotion.

P. 07

NORTH SITE ACTION

Our specialized & skilled workforce is leaving no stone unturned in the development of this landmark project.

P. 06



THE RISE & RISE OF MIRA ROAD

Mira Road

micro-market is fast becoming the new epicentre of growth and development in the extended western suburbs.

Earlier known for affordable homes, Mira Road real estate has emerged as one of the viable destinations for investment in the recent years.

By all means, the extended suburban part of Mumbai has transcended in good infrastructure, better connectivity and green spaces.

Mira Road is getting significant attention due to the rapidly emerging

residential projects that offer an elevated lifestyle.

One of the largest gated communities in Mira Road, JP North is in proximity to educational institutes like Holy Cross Convent School, St. Xaviers and NL Dalmiya School and Management along with recreational establishments like Maxus Mall, PVR, Vardhaman Fantasy Amusement Park etc.

By Road, this suburb connects to Mumbai via the Western Express Highway, and to Thane and Vashi via Ghodbunder Road.

In addition, Mira Road enjoys excellent connectivity to existing and upcoming commercial hubs. In the near future, Mira Road will be a modern super-city occupied by a community of young dynamic residents.



JP NORTH – A LUXURY THAT SPRAWLS BEYOND FOUR WALLS

While Mira Road is seeing an exciting surge in the realty sector, JP North is one gated community that stands apart.

One of the largest gated communities, JP North has been endowed with the reputation of the most premium project in Mira Road.

With six distinct towers, each catering to the diverse needs and aspirations of numerous buyers. JP North has clearly redefined the modern realty landscape.

“Young professionals seek homes which are away from the clutter of the city and are equipped with comforts which can enrich their lifestyle”

- A renowned suburban broker

“With better infrastructure & connectivity, areas located in the northern belt of the city are already offering great returns”

-DNA

“Since 2014, the property prices in Mira Road have appreciated between 20- 25%, and are expected to rise further due to the availability of reasonable properties and its growing market value.”

- Magicbricks

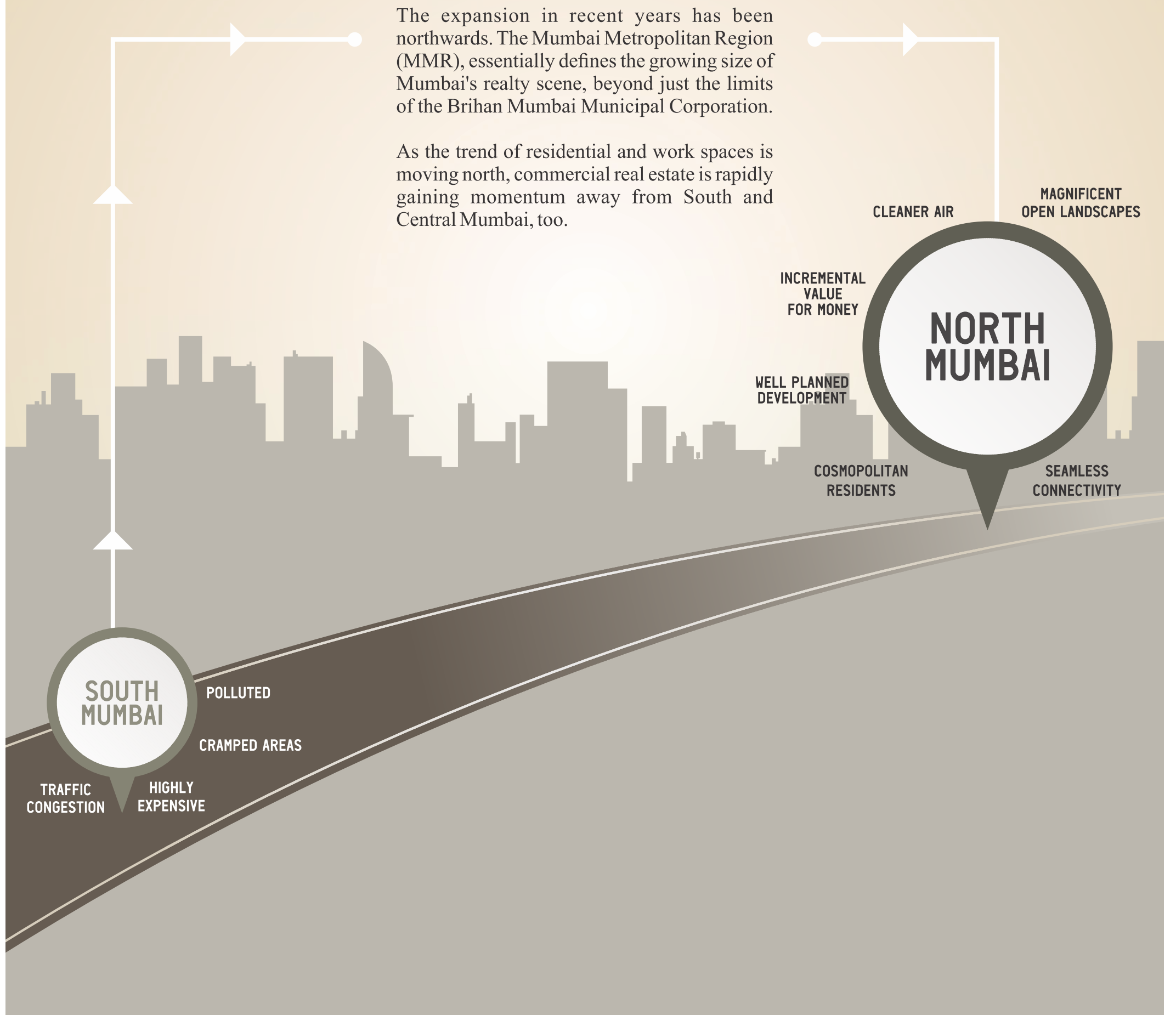


HEADING NORTH

Mumbai as a real estate market is dynamic and versatile, whether it is the price-points, the exclusive nature of property, or the trends.

The expansion in recent years has been northwards. The Mumbai Metropolitan Region (MMR), essentially defines the growing size of Mumbai's realty scene, beyond just the limits of the Brihan Mumbai Municipal Corporation.

As the trend of residential and work spaces is moving north, commercial real estate is rapidly gaining momentum away from South and Central Mumbai, too.



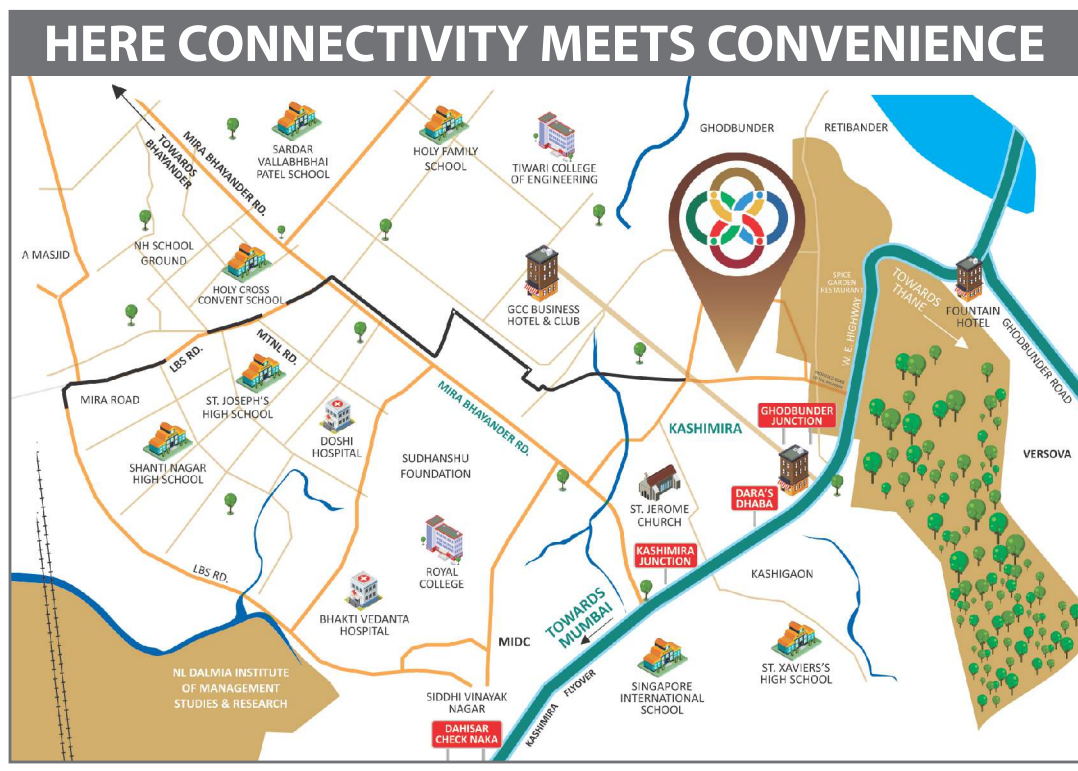


PHASES IN JP NORTH

<p>NORTH CELESTE SPANISH STYLED ARCHITECTURE</p>	<p>NORTH ALEXA CONTEMPORARY ABODES</p>	<p>NORTH ATRIA FOR A MIX OF LUXURY & PRAGMATIC LIVING</p>	<p>NORTH ELARA® MILLENNIAL HOMES FOR THE NEXT GEN</p>	<p>NORTH ESTELLA® THE LUXURY OF SPACE</p>	<p>NORTH EUPHORIA AN ADDRESS FOR THE CRÈME DE LA CRÈME</p>
---	---	--	--	--	---

	<p>JP Infra believes that luxurious living sprawls beyond four walls. Every customer is different and so are the priorities. They understand them and design homes accordingly. They see the amenities which come along as essentials, not privilege.</p>		<p>The lush green spreads in the form of multiple theme gardens comprise over 44,000 thoughtfully picked plantations. Perhaps, the greatest luxury one can savour today, in the cluttered city of Mumbai.</p>			
	<p>The coveted integrated community boasts of over 25 world class amenities encompassing activities for health, shopping, sports, recreation, and community building.</p>		<p>The location gives an edge over many other renowned projects with its direct connectivity to essential modes of commute, hospitals and commercial developments.</p>			

<p>COMMUTE W. Express Highway, Mira Rd. Stn. & Borivali Rly. Station.</p>	<p>HOSPITALS Wockhardt, Umrao & Seven Eleven</p>	<p>MALLS & MULTIPLEXES Maxus Mall, Thakur Mall, Raghuleela Mall, PVR, & Dmart.</p>	<p>EDUCATIONAL ESTABLISHMENTS Singapore Intl. School, N.I Dalmia Inst. of Mgmt. Studies & Research, & Holy Cross Convent.</p>	<p>COMMERCIAL DEVELOPMENTS Infinity IT Park, Mindspace & G Corp Tech Park</p>
--	---	---	--	--



Mira Road, as a suburb has grown by leaps and bounds over the years due to its strategic location. The main reason leveraging the demand for the location is its excellent connectivity to different parts of Mumbai & Thane. Availability of multiple modes of transportation makes every commute seamless & convenient. Getting to any other suburb has eased due to a highly developed network of roads. Easy access to the WEH (Western Express Highway), that connects Mira Road to various employment destinations like NESCO, Infinity IT Park, SEEPZ, Bandra-Kurla Complex (BKC) and Lower Parel, is a major advantage. Besides, the road connectivity, Mira Road is also linked with western railway line of Mumbai. Plan for the four-lane Road that will connect Mira Road to Bhayander and Gorai is also already underway. The upcoming metro rail from Dahisar to Mira Road has increased the demand of Mira Road's residential sector.



HIGHLIGHTS OF JP NORTH



This is a rendered image of the Club House Plan prepared by the Architect. Final color and specification may vary.

1) Nature - Thrive in goodness.

JP North has beautifully developed residential phases which are surrounded by greenery, and natural flora & fauna. Themed gardens like Zen garden, herb & spice garden, butterfly garden as well as play areas make this a well deserved healthy life for your loved ones

2) Gated communities – Privilege of privacy and security.

JP Infra lays heavy emphasis on the security of its residents. Sufficient security cameras and trained security guards are hired.

3) Entertainment galore – Discover something new, every day.

From clubhouses to indoor play areas, swimming pools & open space for outdoor sports, JP North offers everything for everyone. It is a fabulous way of connecting with people and forming new bonds.

4) Connectivity – Commute without compromise.

Located in the heart of Mira Road, JP North has easy access to Western Express Highway, is in close proximity to Ghodbundar Road - that connects Mira Road to Thane, NH 48 and the Fountain Hotel Junction. It is also in close proximity to Mira Road and Dahisar railway station which fall on the western line of railway. Thus, travelling to any part of the city is extremely convenient. Plans for developing another phase of the Metro connecting the rest of Mumbai to Mira Road, Bhayander and Dahisar suburbs, are already underway.

5) A home for every budget – An elevated lifestyle for all.

With studio apartments for young millennials, cozy 1 and 2 BHK homes for young families, and luxurious 3 BHK apartments for extra space, there's much to choose from at JP North. It is also a great investment for NRIs who prefer to have an alternate home in India.

6) Aesthetically designed – Let your home speak for you.

With some of the best architects on board, every home in JP North has been designed tastefully, keeping in mind the needs of the actual user. Each home feels spacious and well-lit, exuding warmth.

7) Proximity to everything you need – Because convenience matters.

Living at JP North lets you have an easy access to all your needs. Schools, colleges, restaurants, cafes, malls, movie theatres and even theme parks are within a few kilometres. So, life is filled with fun and frolic, everyday.

8) Sustainable development – Green is clean.

The team at JP Infra has invested in solar power as well as water harvesting technology. It is our way of being mindful towards Planet Earth. Hopefully, we will set an example for our competitors too.

9) A home cum getaway - You won't feel the need of a vacation.

Having all the comforts of a resort within the complex, one can feel the joy of living in a holiday home all days of the year. Isn't that what life should really be about!



PRESENTS

7 WORD STORIES

Home... a dream.
JP NORTH.
The dream home!

Script your transformation story
at the most iconic address in Mira Road

Site Address: Off Kashimira Road, Mira Road (E).

1800 313 9999
www.jpnorth.com



Visit <https://maharera.mahaonline.gov.in>

- JP NORTH Elara MAHARERA No: P51700007001 • JP NORTH Estella MAHARERA No: P51700008916
- JP NORTH Atria MAHARERA No: P51700004117 • JP NORTH Celeste MAHARERA No: P51700008667
- JP NORTH Euphoria MAHARERA No: P51700016290 • JP NORTH Alexa MAHARERA No: P51700016736



North Site Action

JP North is the largest integrated neighbourhood in Mira Road. The magnitude of work that has happened on-site in the past months is enormous. Our specialized & skilled workforce is leaving no stone unturned in the development of this landmark project.

With Captive RMC plant being used for speedy construction, the structure of Celeste and Estella is nearing completion. The construction of Atria and Elara is in full swing too. Soon, our work of passion will be ready for your possession.



Artist's Impression



Actual Image | November 2018

We Deliver What We Promise

CELESTE

JP North's Spanish Masterpiece – JP North Celeste has come to life the way it was envisaged. With one promise being fulfilled, we are hell-bent to deliver the rest of the phases, as promised.

- Civil work for 15 Slabs - Completed
- Flat finishes (Internal painting, flooring, common entrance lobbies) upto 10th floor - Completed
- Infrastructure & MEP services - WIP
- Clubhouse - WIP
- Podium Slab work - Completed
- All wings : Common lobby tiling work upto 14th floor completed
- External Texture Paint of B & C wing - Completed ; A Wing - WIP



Actual Image | November 2018

ESTELLA

- Civil work - RCC slab completed, Terrace Waterproofing work of A wing - Completed ; B,C,D Wing - WIP
- Flat finishes(plumbing, tiling, common and lift lobby) upto 11th floor - Completed
- MEP Services - WIP
- Clubhouse - WIP
- Podium, STP - WIP
- Civil work of UGWT - Completed



Actual Image | November 2018

ATRIA

- Civil work - RCC slab completed. Terrace work & Elevation features - WIP
- Flat Finishes(Walls, Internal Plaster, Floorings) upto 7th floor - Completed



Actual Image | November 2018

ELARA

- A Wing - 4th Slab (2nd Typical Floor Slab) - WIP
- B Wing - 3rd Slab (1st Typical Floor Slab) - WIP
- C & D wing - Foundation work - WIP



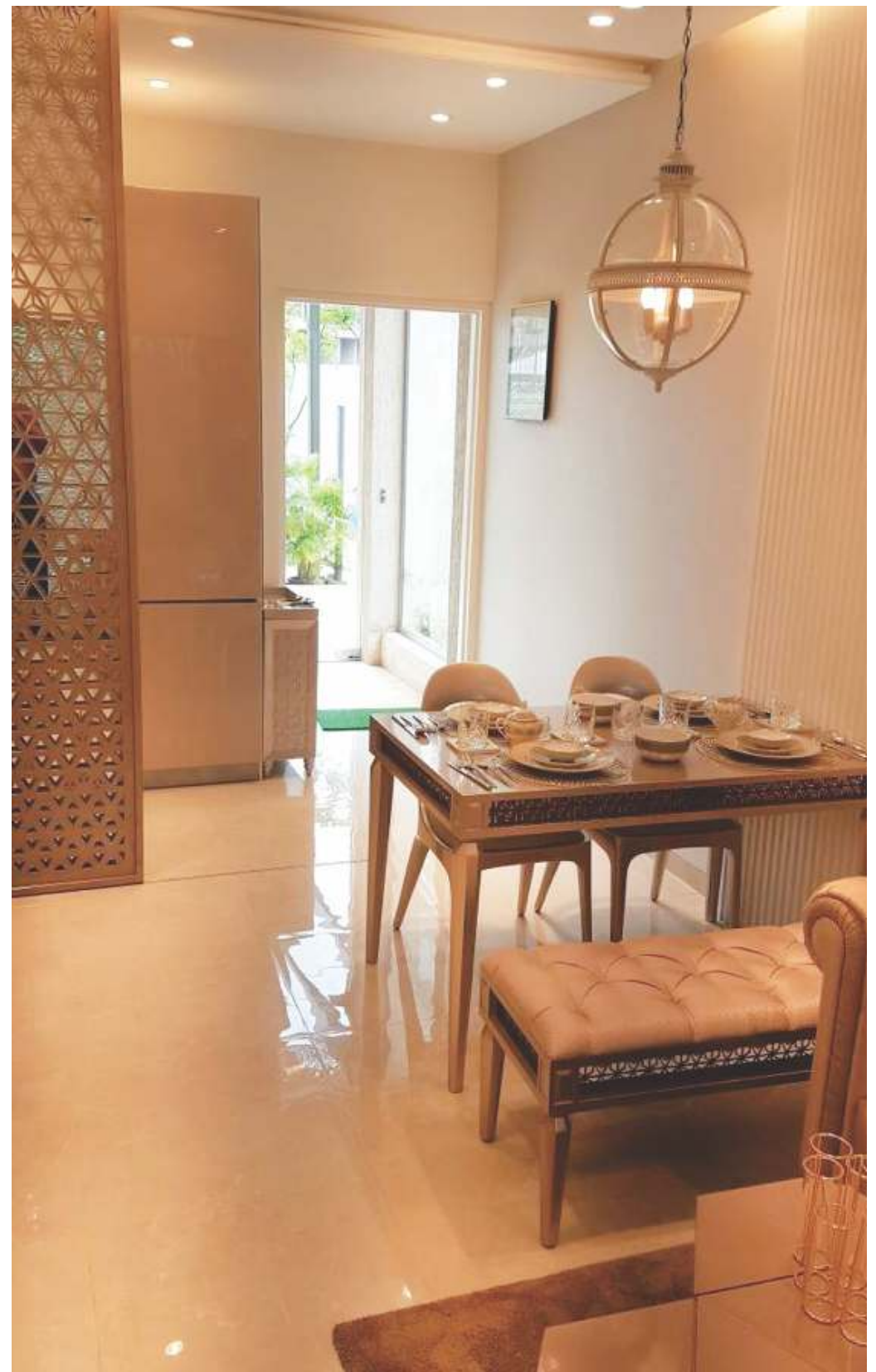
The material, fittings, projections, details, etc., shown in this image is for representation purpose only.

It's a moment of absolute pride for any young professional to own a house. Appreciating the aspirations, JP North Elara is precisely crafted to attain this emotion. Designed to cater to young professionals and couples, who are ready to build their own nests, the apartments are



The material, fittings, projections, details, etc., shown in this image is for representation purpose only.

JP North Elara: UNIQUE MILLENNIAL HOMES, FOR THE FUTURE OF INDIA



The material, fittings, projections, details, etc., shown in this image is for representation purpose only.

relevant to the lifestyle of the generation X, Y and Z. Perfectly suited for modern living and independent nuclear families, Elara's 1 and 2 BHK apartments were recently launched by unveiling its 1 BHK sample flat. These next-gen homes are now eagerly awaiting a visit from you.



DAWN @NORTH

Recycling - To Develop A
Sustainable Gated Community

JP Infra believes in giving back to the society and our mother earth. Small sustainable actions of today can result into a healthy future. As an implementation of this belief JP Infra has installed adequate apparatus at JP North to efficiently utilize our natural resources in the development of dream homes.



Rain Water Harvesting

Over the years, the Mira-Bhayandar Municipal Corporation has been taking measures to resolve the water crisis in this suburban locale; albeit, gradually. Understanding the gravity of the situation, JP North has taken its sense of responsibility rather beyond the ordinary by implementing measures to optimize its use of water. Partnering with one of the world's most renowned companies in water recycling solutions – Tesla, JP North has adopted rainwater and groundwater harvesting for development and future usage. The rain water collected in massive underground tanks is currently being used for construction. The collected water is first passed through water treatment plants to make it reusable.

Mr. Vijay Jain, Chairman – JP Infra states, “We owe our next generations a healthy planet, and the onus is on us to make this possible. We at JP Infra are doing our bit.”



Sewage Treatment Plant

A proper waste management system has been installed in the premises to segregate dry and wet waste. The prime objective of this treatment plant is to make the waste water free from contaminants that are dangerous for human and environment. We have STP (MBBR) of 150 KLD installed in Labor Colony that removes the pollutants from sewage. It produces a liquid and solid sludge fit for discharge to the natural environment or reuse.

A special waste management seminar was conducted for labourers to encourage them to maintain cleanliness and practice proper waste disposal.

Solar Panels

A solar Photovoltaic Panel has been installed on site which generates electricity of 120 KWP.

It is integrated to TATA grid and the energy generated is currently being used in the construction of JP North. Talking about the measures, JP Infra Managing Director, Mr. Shubham Jain said, “Sustainable development is the only way we aspire to grow. Hence, we were committed to implement it.”



GIVING BACK TO THE HANDS THAT MAKE YOUR HOME



JP North becomes an education site for children of labourers. JP North has joined hands with an NGO to provide primary education to the children of labourers working at the site.

A makeshift school, constructed on the premises, runs from 9 am to 4 pm on weekdays. The school has all the required infrastructure and facilities. At present 22 students are being educated in the school. To the labourers’ delight, this is the first time their kids are rather attending school than squandering their precious growing-up years in idleness.



NORTH BUZZ

HOW WE CELEBRATE SUNDAYS AT JP NORTH

Sundays are usually associated with activities like relaxing, spending time with family, shopping etc. But if you are at JP North on a Sunday, the atmosphere is going to be much different.



Scan the QR code to witness a typical Sunday at JP North.



YE FRIENDSHIP DAY... HUM NAHI BHULENGE!

To add fun and frolic to Friendship Day, JP North offered buddies to experience the bond between Jai and Veeru from Sholay in a side-car scooter placed at the site.

Not only were their pictures clicked, they were even printed on mugs and gifted to all our special visitors that day.

Indeed, what better way than letting best buddies relive the Jai-Veeru moment and making it immortal too!

“MY DADDY STRONGEST!”

The Father's day at JP North was unique in its own way.

Inviting children to send in their thoughts about their dads, and what makes them so special, JP North enjoyed an overwhelming response.

Kids poured their heart out. Some brought a smile, while some, even got laughter cracking.



GLITTERS OF NORTH



NORTH-CHA RAJA BRINGS MIRTH & MERRY

Nothing can match the elated feeling of the arrival of Bappa.

At JP North, the celebrations were scaled up to a much grander scale this year, as it welcomed North-cha Raja.

The 11 days were filled with high spiritual energy. Customers

joined in to perform Pooja and the entire neighbourhood participated in praying together.

The festivities were enriched with delicious food & sweets, and accompanied by invigorating music.



UNITY IN DIVERSITY CELEBRATED AT JP NORTH

Donning colours of the National Flag, the entire staff of JP North celebrated the Independence Day. Divided by different religions, castes, languages, and beliefs, all stood together for flag hoisting

ceremony conducted at the Head Office. Adding to the spirit of the occasion, the event was later followed by an inspiring collection of patriotic songs.





Founded in 2006, JP Infra rapidly rose to become one of the most established names in India's Real Estate industry. Most projects developed by this dynamic group are referred as landmarks, and a few, even as benchmarks. The group's endeavour to redefine the life of Mumbai by providing a home that is beyond living spaces, has been appreciated by the citizens and as well as the real estate industry.



POWERING STRONG VISION WITH UNWAVERING PASSION

Helmed by father-son duo, the leadership at JP Infra is a beautiful blend of varying experiences and expertise.

A dynamic vision of Mr. Vijay Jain and persistent passion of Mr. Shubham Jain leads JP Infra.

The father-son duos combine their individual strengths and experience to great effect, leading the company with a strong sense of purpose and commitment.

On every project our Project Management Team, which also includes our Managing Director Mr. Shubham Jain, implements meticulous planning and cutting-edge project management techniques.

We conceive designs which are influenced by world-wide architectural styles, and establish working relationships with specialist contractors to ensure current thinking is allied with best practice.

AWARDS & ACCOLADES

Awards reassure us that we are delivering the standards we've set for ourselves. Having won awards for a number of different criteria, among branding, real estate and infrastructure, sustainability and corporate excellence, we are only inspired to raise the bar every time.

<p>THE BEST REAL ESTATE BRAND AWARDS BEST DEVELOPER JP INFRA</p>	<p>THE BEST REAL ESTATE BRAND AWARDS BEST TOWNSHIP PROJECT JP NORTH</p>	<p>THE BEST REAL ESTATE BRAND AWARDS 'THOUGHT LEADERS' SHUBHAM JAIN</p>
<p>MID-DAY REAL ESTATE ICONS TOWNSHIP OF THE YEAR JP NORTH</p>	<p>ABP NEWS BRAND EXCELLENCE AWARDS IN REALS ESTATE SECTOR MOST ADMIRRED PROJECT OF THE YEAR JP NORTH</p>	<p>CMO COUNCIL MASTER BRAND JP INFRA</p>
<p>CONSUMER'S CHOICE FAST 50 INDIA'S FASTEST GROWING BRAND JP INFRA</p>	<p>INDIA SUSTAINABILITY LEADERSHIP SUMMIT AWARDS BEST SUSTAINABLE DESIGNS OF THE YEAR JP DECKS</p>	<p>DNA REAL ESTATE & INFRASTRUCTURE ROUND TABLE & AWARDS LUXURY PROJECT OF THE YEAR ALTUS</p>



JP NORTH WINS THE
ICONIC TOWNSHIP PROJECT 2018
AWARD

Our most deserving project 'JP NORTH' has been praised and awarded the 'ICONIC TOWNSHIP PROJECT, WESTERN SUBURB' award, at the **TIMES REALTY ICON AWARDS, 2018**, organized by The Times Group.

Behind this award, lies our team's unparalleled hard work and dedication. And we are sure to receive many such appreciations and recognitions in the times to come.



DELIVERED PROJECTS



CHALET AMAR - JUHU

OPULENT LIVING SPACES OFFERING
THE BEST OF LUXURY LIFESTYLE
NUMBER OF HAPPY FAMILIES - 32



UNITY TOWERS - WORLI

LIVE THE LIFE ICONIC WITH EFFICIENTLY
PLANNED RESIDENCES IN THE HEART
OF THE CITY
NUMBER OF HAPPY FAMILIES - 33



JP DECKS - GOREGAON

THE BEST OF AFFLUENT LIVING WITH
MESMERIZING VIEWS OF THE
AAREY COLONY AND THE CITY
NUMBER OF HAPPY FAMILIES - 361

A DECK OF HAPPY SMILES

JP Infra's luxury project JP Decks recently reached a milestone of handing over the possession of residences to their rightful owners. The occasion was captured in frames and was rightfully celebrated. The luxury-oozing homes will be soon occupied by the families and we are sure the ceremony is etched in their minds in the form of a beautiful memory.





CUSTOMERS SPEAK



”

“One of the best things about my home at JP North is that; my windows open to mesmerizing views of the national park and not to someone else's balcony.”

- Mr. Royston Pereira

”

“Having so many amenities and facilities around my home at JP North is definitely going to make my and my family's life easier.”

- Mr. Ganesh Pawar



”

“Buying a home at JP North is one of the best investment decisions I have made in my life.”

- Mr. Sajjan Modi



PRESENTS

7 WORD STORIES

Landlord. Landlord.
Landlord. Landlord.
JP NORTH.
Jealous landlord!

Script your transformation story
at the most iconic address in Mira Road

1800 313 9999
www.jpinfra.com

Please feel free to send us any comments or thoughts you may have on the content of this newsletter to editor@jpinfra.com.

Registered: 4th Floor, Viraj Towers, Western Express Highway, Near WEH Metro Station, Andheri (East), Mumbai - 400 093.

Site Office: North, Village Ghodbunder, Off Kashmirira Road, Mira Road (East) - 401 107.

Visit: <https://maharera.mahaonline.gov.in>

• JP NORTH Elara MAHARERA No: P51700007001 • JP NORTH Estella MAHARERA No: P51700008916
• JP NORTH Atria MAHARERA No: P51700004117 • JP NORTH Celeste MAHARERA No: P51700008667
• JP NORTH Euphoria MAHARERA No: P51700016290 • JP NORTH Alexa MAHARERA No: P51700016736

For more information contact: editor@jpinfra.com | Visit <https://maharera.mahaonline.gov.in>